



THE EFFECTIVENESS OF PORTABLE TRAINING SET FOR HAJJ COURSE (P.A.H.A.M) TOWARD INCREASING THE PILGRIMS UNDERSTANDING: A SURVEY

Mohd Shahir Yahya, Musli Mohammad, Mustaffa Ibrahim, Ghazali Kadis and Abd Khalil Abd Rahim
Faculty of Mechanical and Manufacturing Engineering ,Universiti Tun Hussein Onn Malaysia, Parti Raja, Batu Pahat, Johor, Malaysia
E-Mail: shahir@uthm.edu.my

ABSTRACT

This paper is about a survey on the effectiveness of the portable training set for hajj course (PAHAM) for helping the hajj and Umrah pilgrims to better understand while doing the Hajj and Umrah practical. In Malaysia, most of the travel agency always provide a series of courses every year to assist in understanding the Hajj and Umrah pilgrims before departing for the Holy Land especially Board of Tabung Haji. During practical session, they provide the replica model to help pilgrims to familiarize their selves with the actual situation in Mecca. But the current replica model was found using an iron structure that relatively heavy, not portable and embark more cost of transportation and labor. Therefore, this paper purposely to get the response of hajj and Umrah pilgrims on the portable training set for the hajj course (PAHAM) toward cost reduction and also increase the level of understanding to pilgrims. A survey was conducted involving 244 respondents randomly selected from Hajj and Umrah pilgrims. The data were analyzed using Statistical Packages for Social Sciences (SPSS V19). The results shows, 85.6 % of respondents agreed (mean = 4.21) that this set helping the pilgrims for better understanding and 86.9% of respondents agreed (mean = 4.27) that this set also helping them more focus while training session. As a conclusion, hopefully, this new portable training set concept for the hajj course (PAHAM) will be used by hajj and Umrah pilgrims from all over the world in order to help them for better understand before departing to the Holy land.

Keywords: design, portable product, hajj pilgrims, cost reduction, training set.

INTRODUCTION

Hajj is a duty of every Muslim who is capable of physically and financially to perform. Every year, it is major religious event in which more than two million individuals from all over the world gather at the same time in the Makkah area in the Kingdom of Saudi Arabia. Pilgrimage undertaken to the Holy Land in Mecca during Zulhijjah months to perform certain rituals with certain conditions. (Al-sabban and Ramadan 2005).

In Malaysia, one of the body that manage the hajj for Malaysian Muslim citizen is Board of Tabung Haji. This board already provides a series of courses every year to assist in understanding the Hajj pilgrims before departing for the Holy Land. During practical session, they provide the replica model to help pilgrims to familiarize their selves with the actual situation in Mecca. This replica model consists of one unit of Ka'bah, one unit of Hijr Ismail, 3 units of Jamarat (Ula'a, Wusta', Aqabah) and one unit of Maqame Ebrahim. By using this replica model it helping the pilgrims in order to better understanding while doing the simulation of practical hajj.

(Azidah Abu Ziden 2013) in her study was found that the simulation in teaching pilgrimage has given positive impact on student learning performance because of it can attract students for better understanding. By using this training set for hajj course, as a simulation tools, it is the effective way of learning. This supported by (Hodson 1999) where they also agree that simulation has proven to be an effective way of learning, which enable students to be more innovative and creative.

(Alessi, M. S. dan Trollip 2001) also suggested that simulation is a good way for users to perform certain activities. The method of simulation also can be considered as an effective method as it is almost similar to performing the real pilgrimage, which involves cognitive, affective and psycho-motor domains. Students are able to learn effectively through personal involvement and experience, the "hands-on" opportunities for self-discovery (Centre 2001). But the current replica model was found using an iron structure that relatively heavy and not portable, require more labor for installation and unloading, require a large space for storing the structure, especially for the Ka'bah, require longer time for installation and transshipment and they embark expensive cost of transport. Therefore, this study try to gain response on how effective the use of portable training set for hajj course (PAHAM) in term of cost reduction and also increase the level of understanding among pilgrims while practical session.

RESEARCH METHODOLOGY

Sample

A total of 244 respondents that randomly selected from a secondary schools that participate in the hajj and umrah course. The respondents consist of 83 male (34%) and 161 female (66%). Most of the respondents, are 20 years old and below (98.8%), followed by 21 to 30 years old (1.2%).



Questionnaire

The questionnaire was used in this study. There are two parts of this questionnaire. First part was the respondent demographic information to determine the age, gender, and the respondent experience on participating the hajj and Umrah practical session. The second part was the survey on their perception and the evaluation of the design for a portable training set for the hajj course (P.A.H.A.M) and the effectiveness of this product to the pilgrims understanding. The Likert scale was used in this part where the scale used was 1 (Not important) to 5 (Very important) for rating the characteristics need for practical set. Meanwhile, for perception of the effectiveness of this model was using scale 1(Strongly disagreed) to 5 (Strongly agreed).

RESULT AND DISCUSSION

Observation from current product

From observation and surveys conducted, it was found that the existing set of Practical Hajj Set (Figure-1) used the iron material structure where by this may lead to the following characteristics; Heavy and not portable, require more labor for installation and unloading, require a large space for storing the structure especially for the Ka'bah, require longer time for installation and transshipment and expensive on transportation cost. Therefore, the idea of innovation to make some improvement of the existing practical set has been made.



Figure-1. Current practical set using iron structure.

Survey results

These survey rating data were measured and analyzed by using Statistical Package of Social Science (SPSS 19) for reliability analysis. Model Cronbach's Alpha was used to measure the degree of internal consistency and how well each individual item on a scale correlates with the sum of the remaining items. In the social sciences research, a Cronbach's Alpha more than 0.700 is considered acceptable. Obviously, alpha more 0.800 is preferred and is considered "good reliability". The survey data on the product evaluation and product effectiveness toward increasing the understanding and pilgrims focus shows very good inter reliability result

where alpha value obtained 0.839 as shown in the table 1. The overall results from the survey data on the product evaluation and the effectiveness of product are shown in table 2 and table-3.

Table-1. Reliability statistics.

Cronbach's Alpha	Cronbach's Alpha Based on Standardized Items	N of Items
.839	.843	11

Table-2. Survey data on product evaluation (n=244).

No	Product characteristics	Mean (Var.)
1	Easy to handle	4.03 (0.629)
2	More safety in crowd	4.07 (0.852)
3	Portable	4.18 (0.804)
4	Stability	4.21 (0.761)
5	Light weight	4.33 (0.592)
6	Suitable in-door activity	4.32 (0.860)
7	Suitable out-door activity	3.97 (1.291)
8	Easy to clean	4.51 (0.547)
9	Structured	4.53 (0.447)

Table-3. Survey data on product effectiveness (n=244).

No	Effectiveness of product	Mean (Var.)
1	Increase the pilgrims understanding while training	4.21 (0.605)
2	Increase the pilgrims focus while training	4.27 (0.550)

From the product evaluation survey data, it was shows that, more than 80% of respondents agreed that this portable training set with score average 4.00 (agreed) and above for product characteristics such as structured (91.8%), easy to clean (91.8%), light weight (86.9%), easy to handle (81.1%), portable (81.5%), stability aspect (81.6%), and suitable for indoor activity (85.2%). Nevertheless, only safety aspect (76.6%) and suitable for outdoor activity (70.9%) was found shows the results between 70% to 80% with score average 4.00 (agreed). For the effectiveness of the portable training set for hajj course, it was shown that, by using this portable training set (PAHAM), 85.6 % of respondents agreed (mean = 4.21) that this set helping the pilgrims for better



understanding and 86.9% of respondents agreed (mean = 4.27) that this set helping them more focus while training session.

Portable training set for hajj course (PAHAM)

Portable Training Set for Hajj Course (PAHAM) was developed using inflatable concepts in order to increase the understanding of pilgrims while training. This set consists of; one unit of Ka'bah with approx. size 19.73 m^3 (10% from actual size), one unit of Hijr Ismail with approx. size 0.77 m^3 (10% from actual size), one unit of MaqameEbrahim with approx. size 0.90 m^3 (50% from actual size), three units of Jamarat with approx. size 1.72 m^3 (5% from actual size), and special blower for each model as shown in figure-2 and Figure-3.



Figure-2. Ka'bah, Hijr-Ismail and MaqameEbrahim model.



Figure-3. Jamarat model.

Process of installation

This portable training set need only 12V direct current for blower. The installation process of this set as shown in the flow chart below (Figure-4). The installation process start with plug in the electrical point. Then, connect the set to the blower. Each set have their own blower. Next, switch on the button at blower until all items ready.

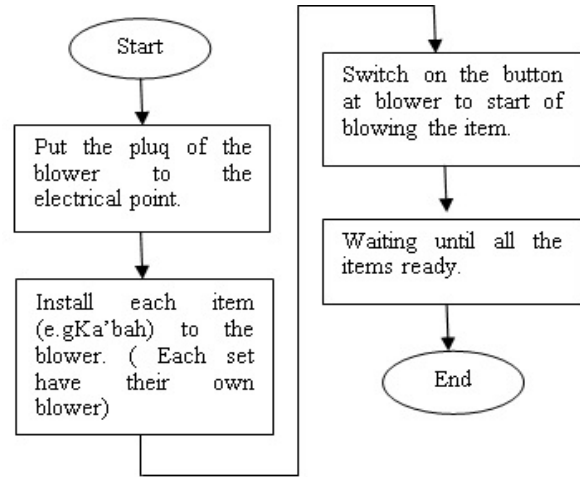


Figure-4. The flow chart of installation process for portable set.

The time taken for installing the all portable set as shown in the table 4. Ka'bah need only approximate 6 minutes to installed, while hijrismail only need 20 second to installed. Besides that, in order to install the MaqameEbrahim and Jamarat, its need 45 second and 35 second respectively. Therefore, the total time for installing a complete set was approximate 530 second (~9 minutes) only, compared to current product. The concept of installation as shown in Figure-5.

Table-4. Installation time for each item.

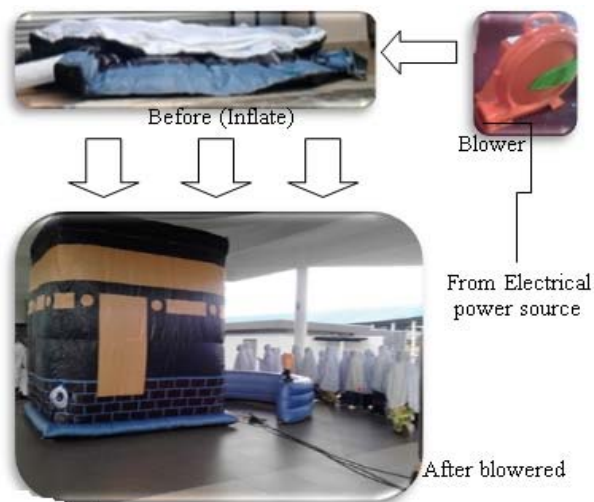
No	Item	Quantity	Average time for installation (approx. in sec)	Average Total Time (Sec.)
1	Ka'bah	1	360	360
2	Hijr-Ismail	1	20	20
3	MaqameEbrahim	1	45	45
4	Jamarate	3	35	105
			TOTAL	530

Comparison current and improvement set

The comparison was made for the current and improvement set as shown in table-5. By using the advantages of the inflatable concepts, this portable training set for hajj course (PAHAM) just only need less than 15 minutes to installed complete set rather than needs more than 2 hours for existing product. Besides that, other advantages of this portable training set are only need small space for storage, one labour for loading, unloading, and installing set, easy to move because of light weight, shape and appearance more realistic, and this set suitable to used indoor and outdoor activity. As the course is conducted at many different locations, it also can help the company that conducted the course to reduce the costs of transportation and installation at the same time increase their productivity.

**Table-5.** The comparison of the characteristic for current and portable set.

No	Characteristics	Existing Practical Set	Portable Training Set (PAHAM)
1	Installation time	Need more than 2 hours to installed	Need only less than 15 minutes to installed all set. (Inflatable concept)
2	Space for storage	Large space required	Small space required
3	Transportation	Need lorry because of long iron structure and heavy	Need only car (light and easy to carry)
4	Number of labour required to loading, unloading and installation	More than 2 labour required	Only 1 labour required.
5	Portable	Difficult to moved (Heavy weight)	Easy to moved (Light weight)
6	Shape compared to actual	Less realistic	More realistic
7	Place for installation	Suitable used only outdoor	Suitable used for indoor and outdoor

**Figure-5.** Example of the installation process of PAHAM.

CONCLUSIONS

In conclusion, this portable training set for hajj course, was very beneficial to pilgrims in order to increase the knowledge and understanding of Hajj, Umrah and Ziarah and also help them to increase their awareness of the real situation in the Holy Land. Based on the results, more than 80% of respondents agreed that this portable training set (PAHAM) helping them for better understanding and increase their focus while training session. With this innovation, it also can help the company that conducted the course to reduce the costs of transportation and installation at the same time increase their productivity.

With this new innovations of practical Hajj set, it has the potential to be commercialized to all travel agencies that provides Umrah courses in their package, secondary school that containing Hajj and Umrah syllabus,

also the local higher institution that have curriculum consists of Hajj and Umrah.

In addition, this innovation also has the potential to be marketed throughout the Islamic countries such as Indonesia, Brunei and it is not impossible to penetrate the South-east Asian market.

ACKNOWLEDGEMENTS

The author would like to thank Universiti Tun Hussein Malaysia for giving funding for this project.

REFERENCES

- [1] Alessi, M. S. dan Trollip, R. S. 2001. Multimedia for Learning-Methods and Development. 3rd ed. Needdham Heights, Massachusetts.
- [2] Al-Sabban, Sahl A, and Hussam M Ramadan. 2005. "A Simulation Study of the Shuttle-Bus Pilgrim Transportation System between the Holy Sites for the 1422H Hajj Season." Journal of King Abdul Aziz : Engineering Science 16 (2): 71–93.
- [3] Azidah Abu Ziden, Muhammad Faizal Abdul Rahman. 2013. "International Journal of Instruction." International Journal of Instruction 6 (2).
- [4] Centre, Curriculum Development. 2001. Thinking Skills in Teaching and Learning. Kuala Lumpur: Ministry of Education Malaysia.
- [5] Hodson, Les Pang &. 1999. "The Use Of Simulation In Process Reengineering Education A. Farrington, H. B. Nembhard, D. T. Sturrock, and G. W. Evans, Eds." In Process Reengineering Education Proceedings of the 1999 Winter Simulation Conference, edited by Eds. A. Farrington, H. B. Nembhard, D. T. Sturrock, and G. W. Evans, 1397–1402.